

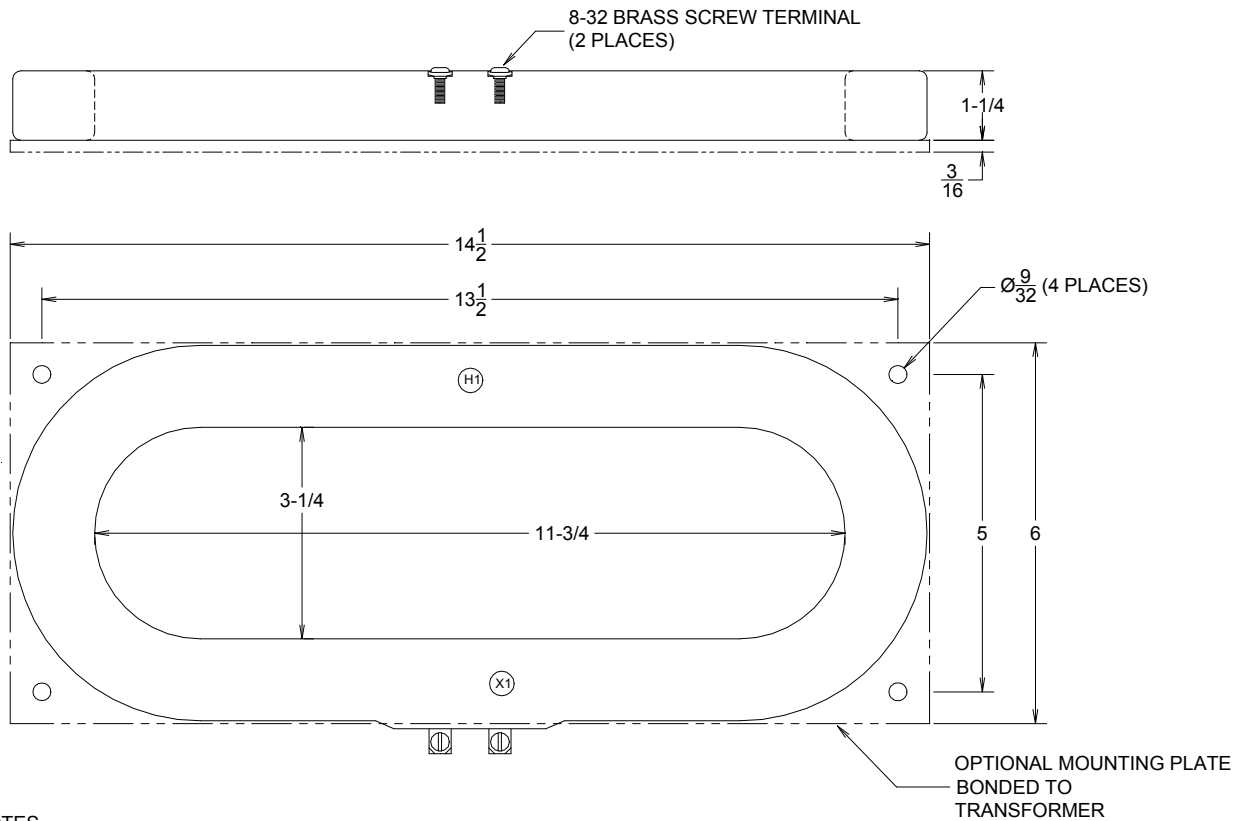
W.I.C.C. Ltd
119 MULLER RD
PO Box 252
WASHINGTON IL 61571
(309)-444-4125
FAX (309)-444-3313

CURRENT TRANSFORMER MODEL J3

3-1/4" x 11-3/4"

PAGE No 2-4

REV 18DEC00



NOTES

- 1). ALL DIMENSIONS IN INCHES
- 2). ALL DIMENSIONS REF ONLY

Specifications

- ☐ Secondary sources 5 amps AC at rated F.S. primary current
- ☐ Nominal operating frequency range is 50-400HZ
- ☐ Thermal rating factor is 1.33 @ 30C for all ratios
- ☐ Insulation voltage class is 0.6KV BIL 10KV
- ☐ For indoor applications only
- ☐ Reference documents IEEE C57.13, UL1244, CSA CAN3-C13-M83, and IEC 44-1
- ☐ Enclosure is multi-layer tape buildup with heavy vinyl finish, color is black
- ☐ Optional plate is XX phenolic

Options, contact Factory for information

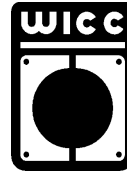
- ☐ 2.0, 5.0, and 10 VAC output at F.S. primary amperage. Other non-standard ratings also available.
- ☐ 1 A output at F.S. primary amperage. Other non-standard ratings also available
- ☐ Thermal ratings above 1.33 for selected ratios
- ☐ 8-32 Screw Terminals or #16 AWG UL 1015 Lead Wires
- ☐ Custom lead wire lengths and types
- ☐ Available with B71 bus bar brackets. See Bracket Data Section for dimensions.

3-1/4" x 11-3/4"

CURRENT TRANSFORMER MODEL J3

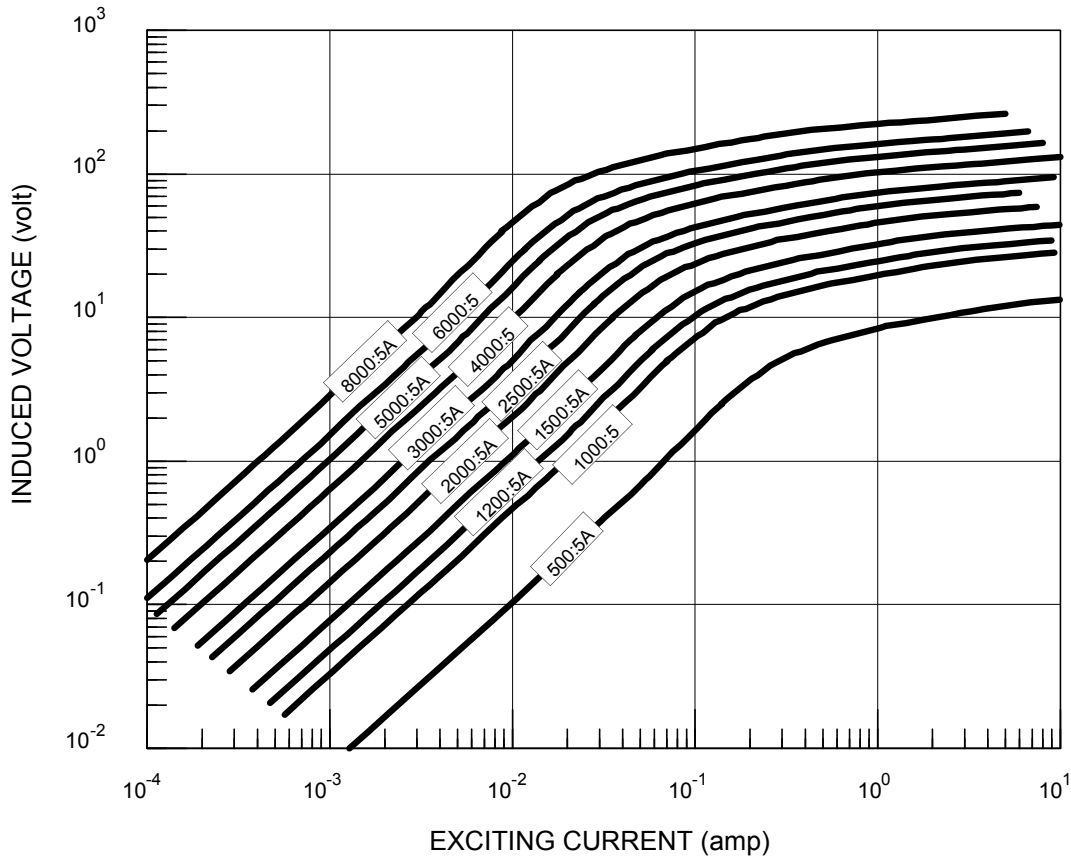
PAGE No 2-5

REV 18DEC00



W.I.C.C. Ltd
119 MULLER RD
PO Box 252
WASHINGTON IL 61571
(309)-444-4125
FAX (309)-444-3313

TYPICAL EXCITATION CURVE for WICC MODEL J3 at 60HZ



W.I.C.C. PART NUMBER *	RATIO	ACCURACY @ 60HZ		NOMINAL WINDING RESISTANCE (ohm)
		± %	BURDEN (VA)	
J3-500-00-xxx	500:5A	1.0	3.5	0.10
J3-1000-00-xxx	1000:5A	1.0	15	0.32
J3-1200-00-xxx	1200:5A	1.0	20	0.37
J3-1500-00-xxx	1500:5A	1.0	40	0.46
J3-2000-00-xxx	2000:5A	1.0	75	0.61
J3-2500-00-xxx	2500:5A	1.0	100	0.76
J3-3000-00-xxx	3000:5A	1.0	100	0.91
J3-4000-00-xxx	4000:5A	1.0	100	1.3
J3-5000-00-xxx	5000:5A	1.0	100	1.6
J3-6000-00-xxx	6000:5A	1.0	100	2.0
J3-8000-00-xxx	8000:5A	1.0	100	2.7

* "xxx" describes termination: "T" FOR BRASS SCREW TERMINALS and "Lyyy" FOR LEAD WIRES (Where "yyy" is the lead length in inches. For example, "L24" represents 24 inch long lead wires.)