

W.I.C.C. Ltd
119 MULLER RD
PO Box 252
WASHINGTON IL 61571
(309)-444-4125
FAX (309)-444-3313

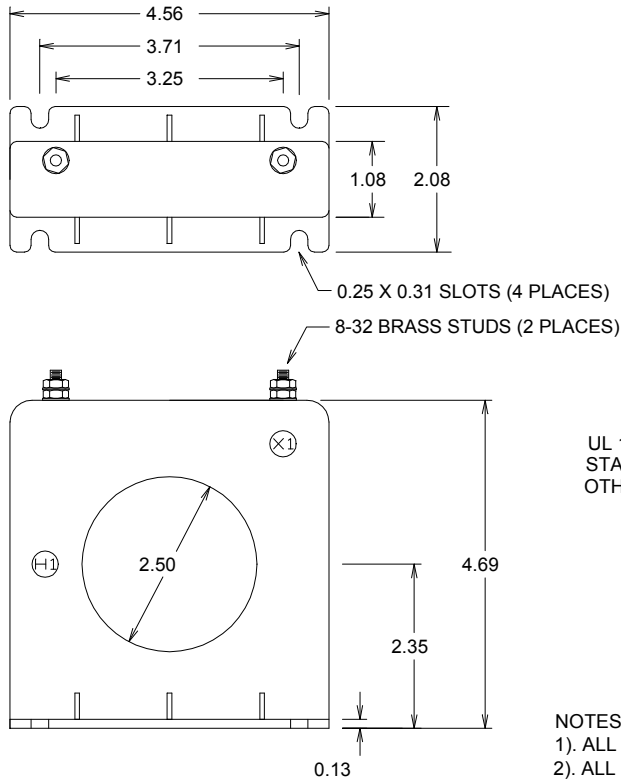
CURRENT TRANSFORMER MODEL 652F

2.50" I.D.

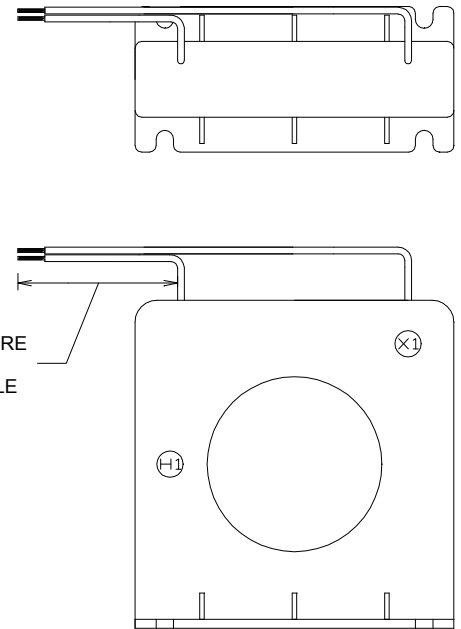
PAGE No 1-54

REV 18DEC00

TERMINAL OPTION



LEAD WIRE OPTION



NOTES

- 1). ALL DIMENSIONS IN INCHES
- 2). ALL DIMENSIONS REF ONLY

Specifications

- ☐ Secondary sources 1 amps AC at rated F.S. primary current
- ☐ Nominal operating frequency range is 50-400HZ
- ☐ Thermal rating factor is 1.33 @ 30C for all ratios
- ☐ Insulation voltage class is 0.6KV BIL 10KV
- ☐ For indoor applications only
- ☐ Reference documents IEEE C57.13, UL1244, CSA CAN3-C13-M83, and IEC 44-1
- ☐ Enclosure is made of glass-filled Nylon, color is black

Options, contact Factory for information

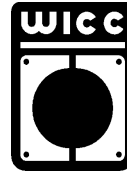
- ☐ UL and Canadian UL Recognized Component. File E100575.
- ☐ 2.0, 5.0, and 10 VAC output at F.S. primary amperage. Other non-standard ratings also available.
- ☐ 5, 0.2, and 0.1 A output at F.S. primary amperage. Other non-standard ratings also available
- ☐ 8-32 Brass Studs or #18 AWG UL 1015 Lead Wires.
- ☐ Custom lead wire lengths and types.
- ☐ Thermal ratings above 1.33 for selected ratios.
- ☐ Housing with or without mounting flange (See Model 652 for no-flange design).
- ☐ Center tap and custom multi tap winding arrangements

2.50" I.D.

PAGE No 1-55

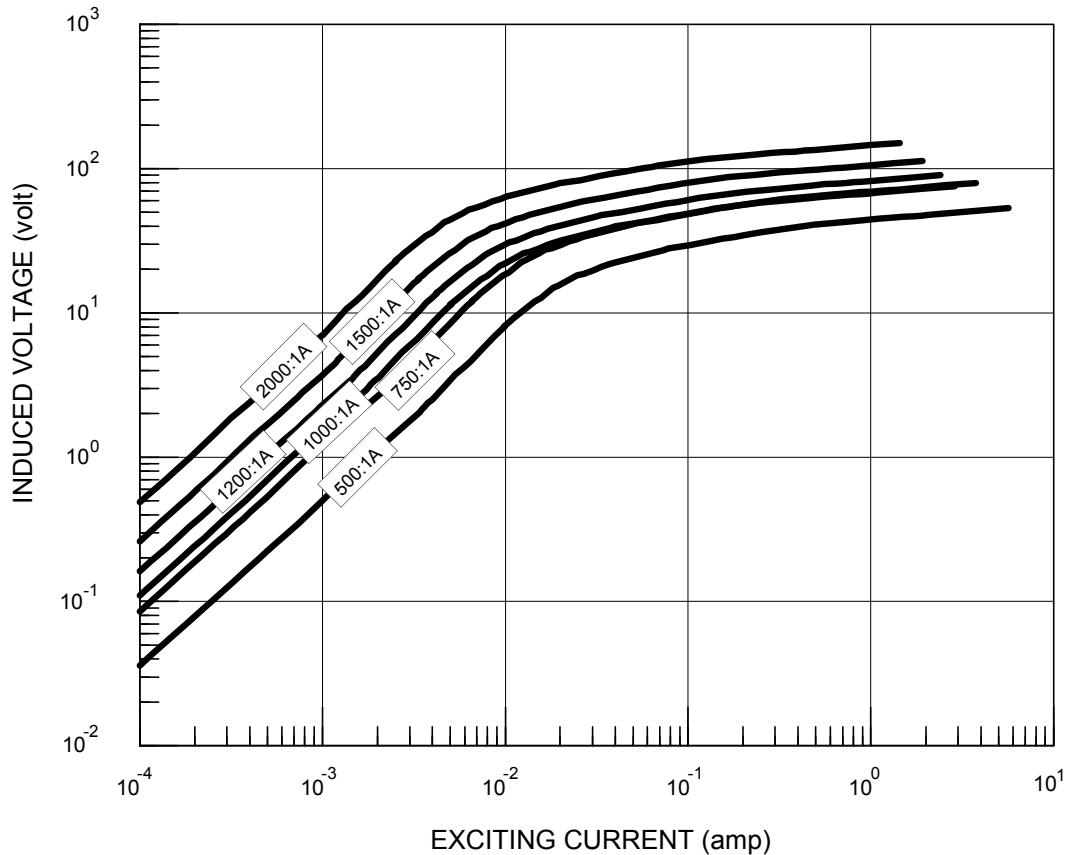
REV 18DEC00

CURRENT TRANSFORMER MODEL 652F



W.I.C.C. Ltd
119 MULLER RD
PO Box 252
WASHINGTON IL 61571
(309)-444-4125
FAX (309)-444-3313

TYPICAL EXCITATION CURVE for WICC MODEL 652F at 60HZ



W.I.C.C. PART NUMBER *	RATIO	ACCURACY @ 60HZ		NOMINAL WINDING RESISTANCE (ohm)
		± %	BURDEN (VA)	
652F-500-01-xxx	500:1A	1.0	7.5	2.4
652F-750-01-xxx	750:1A	1.0	15	3.6
652F-1000-01-xxx	1000:1A	1.0	15	5.4
652F-1200-01-xxx	1200:1A	1.0	20	6.6
652F-1500-01-xxx	1500:1A	1.0	25	8.4
652F-2000-01-xxx	2000:1A	1.0	30	12

* "xxx" describes termination: "T" FOR BRASS STUDS, "Lyyy" FOR LEAD WIRES (Where "yyy" is the lead length in inches. For example, "L24" represents 24 inch long lead wires.)