

W.I.C.C. Ltd
119 MULLER RD
PO Box 252
WASHINGTON IL 61571
(309)-444-4125
FAX (309)-444-3313

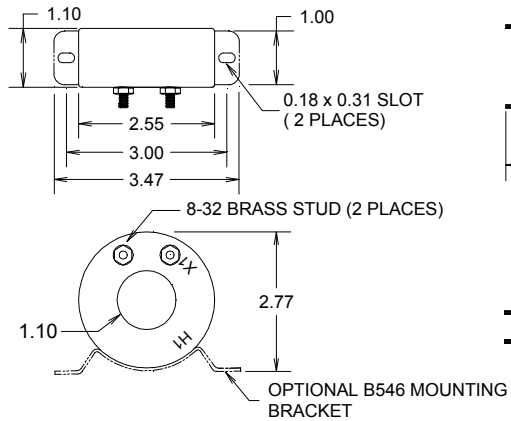
CURRENT TRANSFORMER MODEL 546

1.10" I.D.

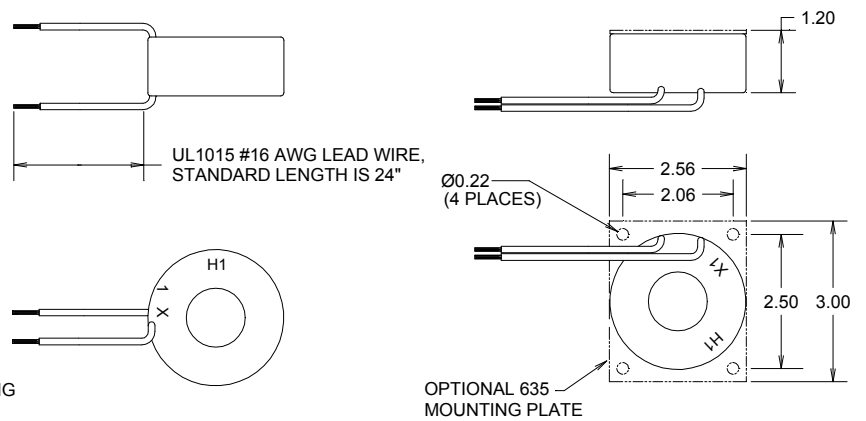
PAGE No

REV 03/19/99

TERMINAL OPTION



LEAD WIRE OPTION



NOTE:
1) ALL DIMENSIONS IN INCHES
2) ALL DIMENSIONS REF ONLY

Specifications

- ☐ Secondary sources 5 amps AC at rated F.S. primary current
- ☐ Nominal operating frequency range is 50-400HZ
- ☐ Thermal rating factor is 1.33 @ 30C for all ratios
- ☐ Insulation voltage class is 0.6KV BIL 10KV
- ☐ For indoor applications only
- ☐ Conforms to provisions of IEEE C57.13 and IEC 44-1
- ☐ Enclosure is glass-filled nylon, color is black
- ☐ Optional plate is XX phenolic, optional bracket is steel

Options, contact Factory for information

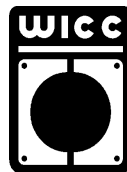
- ☐ UL and Canadian UL Recognized Component. File E100575
- ☐ 2.0, 5.0, and 10 VAC output at F.S. primary amperage. Other non-standard ratings also available.
- ☐ 1.0, 0.2, and 0.1 A output at F.S. primary amperage. Other non-standard ratings also available
- ☐ 8-32 Brass Stud Terminals or #16 AWG UL 1015 Lead Wires
- ☐ Custom lead wire lengths and types
- ☐ Thermal ratings above 1.33 for selected ratios.
- ☐ Center tap and custom multi tap winding arrangements

1.10" I.D.

CURRENT TRANSFORMER MODEL 546

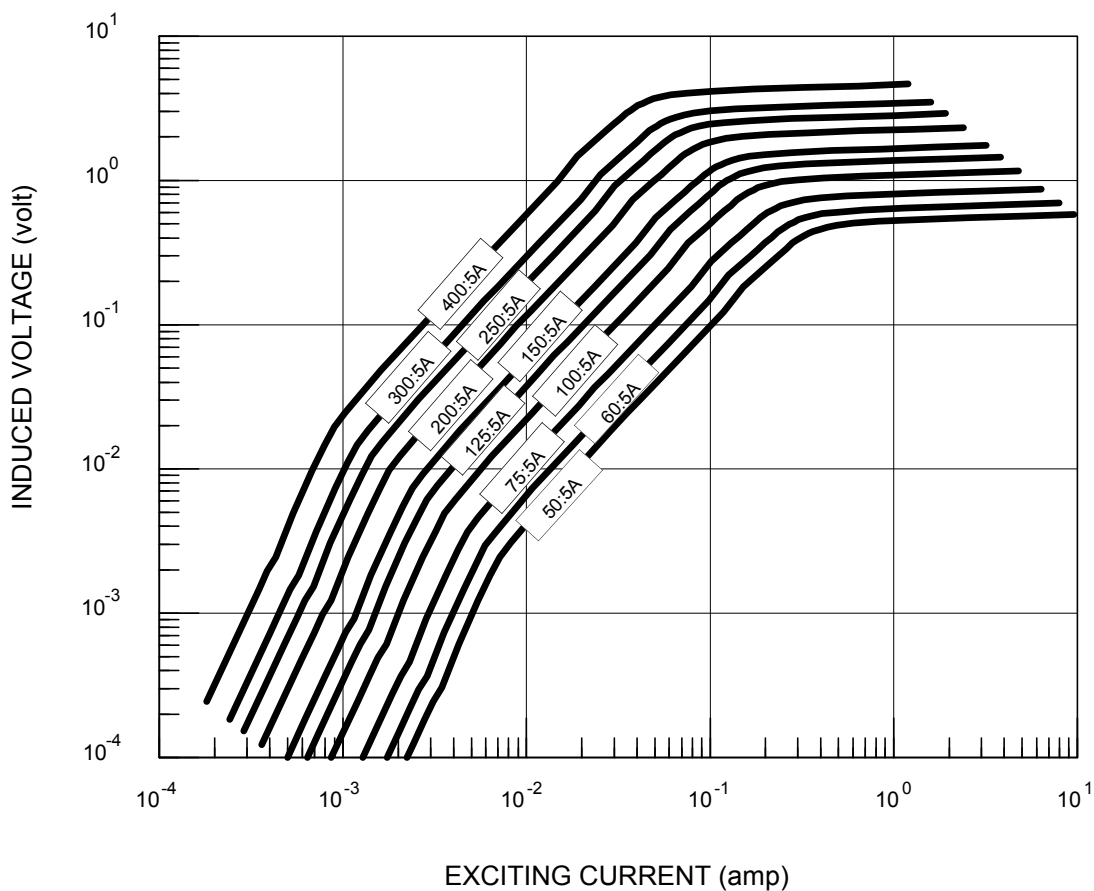
PAGE No

REV 04/15/99



W.I.C.C. Ltd
119 MULLER RD
PO Box 252
WASHINGTON IL 61571
(309)-444-4125
FAX (309)-444-3313

TYPICAL EXCITATION CURVE for WICC MODEL 546 at 60HZ



W.I.C.C. PART NUMBER *	RATIO	ACCURACY @ 60HZ, pf = 0.95		NOMINAL WINDING RESISTANCE (ohm)
		± %	BURDEN (VA)	
546-050-00-xxx	50:5A	3.0	2.0	0.007
546-060-00-xxx	60:5A	2.0	2.0	0.008
546-075-00-xxx	75:5A	2.0	2.0	0.01
546-100-00-xxx	100:5A	1.0	2.0	0.02
546-125-00-xxx	125:5A	1.0	2.5	0.025
546-150-00-xxx	150:5A	1.0	4.0	0.03
546-200-00-xxx	200:5A	1.0	5.0	0.04
546-250-00-xxx	250:5A	1.0	7.5	0.052
546-300-00-xxx	300:5A	1.0	10	0.062
546-400-00-xxx	400:5A	1.0	15	0.083

* "xxx" describes termination: "T" FOR BRASS STUDS, "Lyyy" FOR LEAD WIRES (Where "yyy" is the lead length in inches. For example, "L24" represents 24 inch long lead wires.)